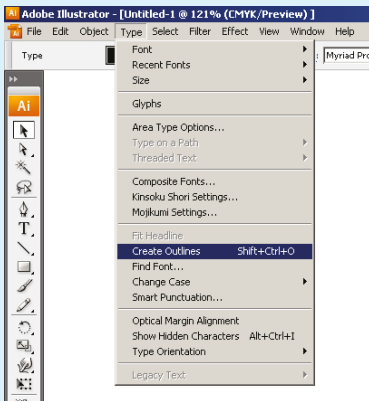
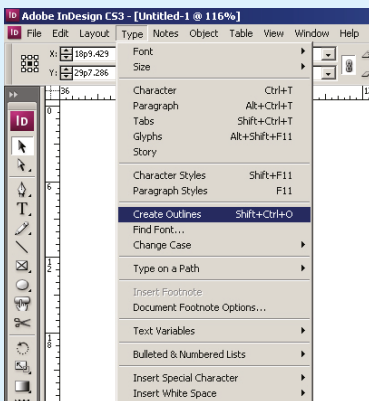


File Format for Printing

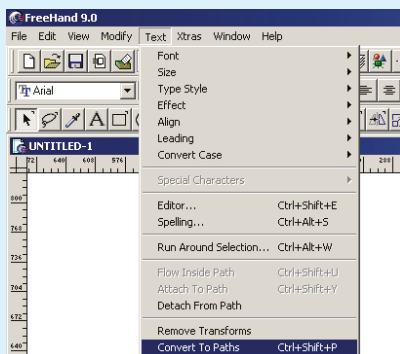
1. Convert all TEXT to Line Art



- For Adobe Illustrator:
(Type --> Create Outlines)
Shortcut Key: Shift+Ctrl+O

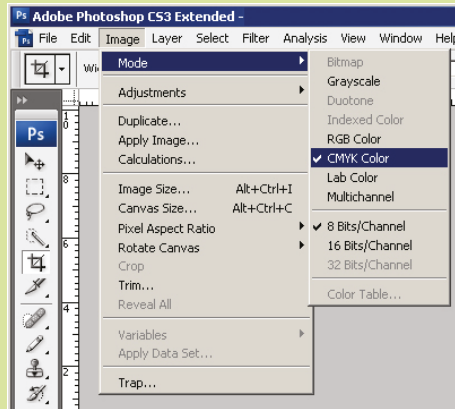


- For Adobe Indesign.
(Type --> Create Outlines)
Shortcut Key: Shift+Ctrl+O



- For Macromedia Freehand
(Type --> Convert to paths)
Shortcut Key: Shift+Ctrl+P

2. Convert all Image Color Mode to CMYK.



3. All graphics files should be saved in recommended format. This will provide optimum results for printing.

TIFF files should be saved without Image Compression.

EPS files should be saved with an 8 bit preview and all selection uncheck.

JPG files should be at least 150dpi for large artwork (Eg: Banner) and 300dpi for small artwork (Eg: Namecard)

Recommended File Type



Adobe Illustrator



Tiff Format



Jpeg Format



EPS Format



Adobe Photoshop



Adobe PDF



Macromedia Freehand

